

Recombinant Protein A/G/L-Cys

Catalog #: 1006-02 Lot #: See label

PrimeGene[™]
a biotechne brand

Description

Molecular Weight:

Approximately 89.3 kDa with a Cys on C-terminus, a single non-glycosylated polypeptide chain containing 806 amino acids.

Source:

Escherichia coli.

Quantity:

1mg/5mg/100mg/1g

Protein per Gram Powder:*

See Label.

Concentration for 1 unity OD at 280 nm:

1.412 mg/ml

Specification

Physical Appearance:

Sterile Filtered White lyophilized (freeze-dried) powder.

Purity:

> 95 % by SDS-PAGE and SEC-HPLC analyses.

Specificity:

The recombinant Protein A/G/L is a genetically engineered protein containing 5 IgG-binding regions of protein A, 2 of protein G and 5 of Protein L. Cell wall binding region, cell membrane binding region and albumin binding region have been removed from the recombinant

Protein A/G/L to ensure the maximum specific IgG binding. The recombinant Protein A/G/L is ideal for purification of polyclonal or monoclonal IgG antibodies. Protein A/G/L binds to human, mouse, rat cow, goat, sheep, rabbit, guinea pig, pig, dog and cat IgG.

Endotoxin Level:

Less than 0.1 EU/ μ g of Protein A/G/L-Cys as determined by LAL method.

Formulation:

Lyophilized from additive free solution.

Usage Guide

Stability & Storage:

- Use a manual defrost freezer and avoid repeated freeze-thaw cycles.
- 12 months from date of receipt, -20 to -70 °C as supplied.
- 1 month, 2 to 8 °C under sterile conditions after reconstitution.
- 3 months, -20 to -70 °C under sterile conditions after reconstitution.

Reconstitution:

Dissolve in distilled water or saline.

Shipping:

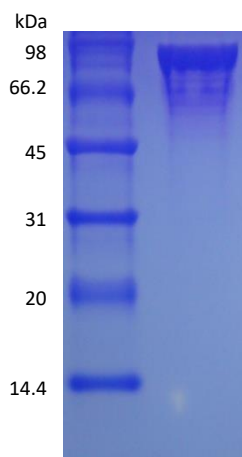
The product is shipped at ambient temperature. Upon receipt, store it immediately at -20 °C.

*Masses of the protein and powder are not equal.

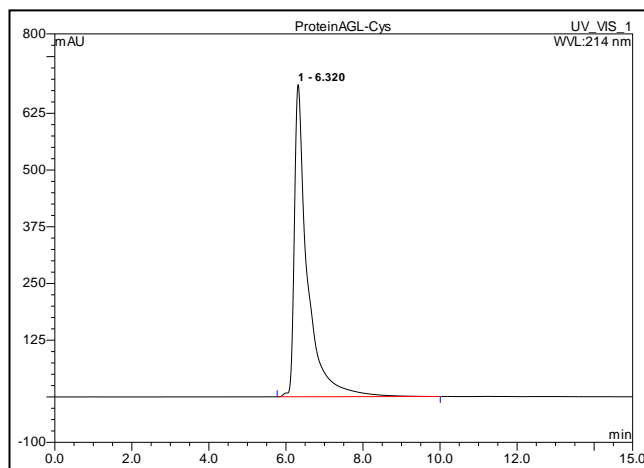
Background

Protein A/G/L is a genetically engineered protein that combines the IgG binding profiles of all Protein A, Protein G and Protein L. It is a gene fusion product. Recombinant fusion protein A/G/L contains five Ig-binding regions of protein L, five IgG binding domains from Protein A, and two Ig-binding region of protein G. Cell wall binding regions, albumin binding regions and other non-specific binding regions have all been eliminated from the fusion protein to ensure the maximum specific IgG binding.

SDS-PAGE



SEC-HPLC



Rev. 09/19/2023 V.3

Manufactured By Shanghai PrimeGene Bio-Tech Co., Ltd.

FOR RESEARCH USE ONLY. NOT FOR HUMAN USE.